



Marine Department

Meeting facilitation and security Safety
of life and property of short-term tourists Free
visa for China and Kazakhstan

Tourism Safety Measures "Water Safety Measures"

Thursday, October 12, 2023 at 2:00 p.m. at

Rakwinai Conference Room, Floor 3, Pattaya Police Station.

01

Marine Department

, Pattaya Branch

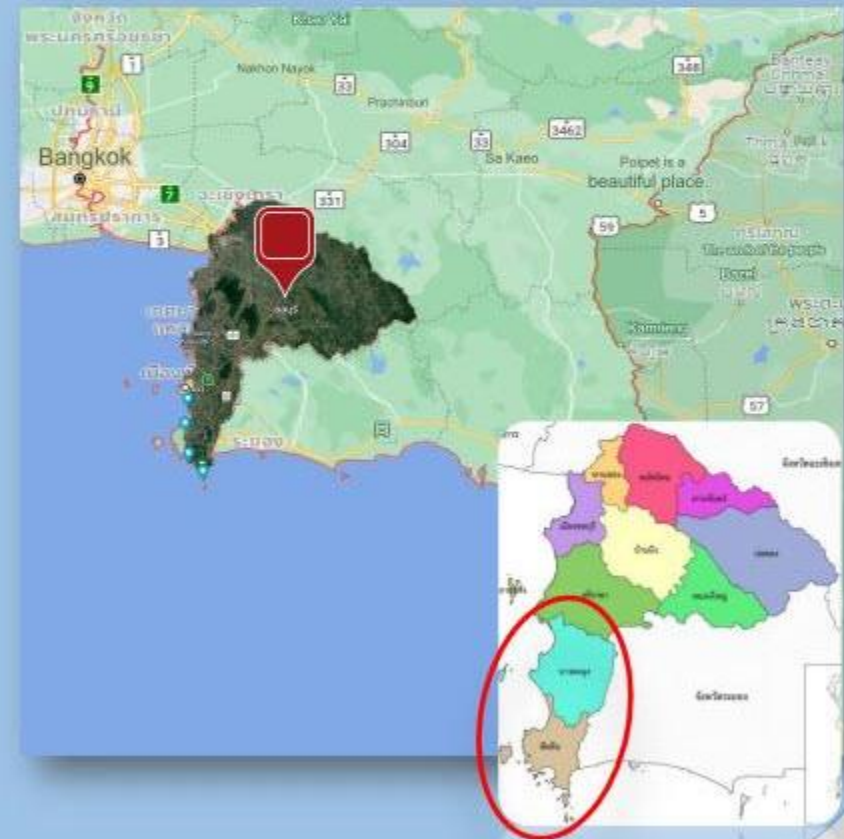


Scope of area of responsibility

Regional Harbor Office, Pattaya Branch

Regional Harbor Office 6, Marine Department

It is responsible for inspecting water transportation, inspecting boats, registering boats, and compiling statistics on water transportation performance. Responsible for taking care of rivers, canals, seas, and beaches of the sea. Within the area of responsibility: Bang Lamung District, Pattaya City, and Sattahip District. Chonburi Province By complying with the law and related regulations are divided into internal government departments Administrative work, water transport inspection work, ship inspection work, and ship registration work.





Work force structure

Regional Harbor Office, Pattaya Branch



Khun Ekarat

นายเอการ คัมภีร์

ผู้อำนวยการสำนักงานเจ้าท่าภูมิภาคสาขาพัทยา

Inspect water transport

งานตรวจการขนส่งทางน้ำ



นายอภิวัฒน์ คัมภีร์
เจ้าพนักงานตรวจการขนส่งทางน้ำ



นางสาวกัญญา วัฒนศิริ
นักวิชาการขนส่งชำนาญการ



นายสุวิทย์ พิเศษขจรกุล
เจ้าพนักงานขนส่งชำนาญการ



นายสมนึก ศรีจันทร์
เจ้าพนักงานขนส่งชำนาญการ



นายประจักษ์ บุญรอด



นายสมศักดิ์ บุญรอด

Patrol Boat

Marine Department

เรือตรวจการเจ้าท่า



นายประจักษ์ บุญรอด
ช่างสิบหมู่



นายสมศักดิ์ บุญรอด
ช่างสิบหมู่

Boat Registration

งานทะเบียนเรือ



นางสาวณัฏฐา กฤษณะโมลี
นักวิชาการขนส่งชำนาญการ



นางสาวณัฏฐา กฤษณะโมลี
เจ้าพนักงานขนส่ง

Boat Inspection

งานตรวจเรือ



นายสมศักดิ์ บุญรอด
เจ้าพนักงานตรวจเรือชำนาญการ

Administrative

งานธุรการ



นายอภิวัฒน์ คัมภีร์
เจ้าพนักงานบริหารและนิติการชำนาญการ



นางสาวกัญญา วัฒนศิริ
เจ้าพนักงานบริหารและนิติการ

Correcting illegal fishing

งานแก้ไขการลักประมงผิดกฎหมาย



นางสาวกัญญา วัฒนศิริ
พนักงานสอบสวน



นางสาวกัญญา วัฒนศิริ
พนักงานสอบสวน

water intrusion

งานสิ่งกีดขวางน้ำ



นายประจักษ์ บุญรอด
พนักงานสอบสวน



นางสาวกัญญา วัฒนศิริ
พนักงานสอบสวน

พนักงานประจำท่าเรือ

Port staff



นางสาวกัญญา วัฒนศิริ
พนักงานสอบสวน



นางสาวกัญญา วัฒนศิริ
พนักงานสอบสวน



นางสาวกัญญา วัฒนศิริ
พนักงานสอบสวน



นางสาวกัญญา วัฒนศิริ
พนักงานสอบสวน



นางสาวกัญญา วัฒนศิริ
พนักงานสอบสวน



นางสาวกัญญา วัฒนศิริ
พนักงานสอบสวน

government officer	8
Permanent employee	0
government employee	5
Contract employees	10
Total (people)	23



Marine Department

vehicle



- car 2 cars
- patrol boat 1 boat
- JET SKI 2 ships



Marine Department

Important ports in the area (Pattaya)

1. South Pattaya Pier (Bali Hai Laem)



2. Tawaen Beach passenger pier (Koh Larn)



3. Passenger pier in front of the house ((Koh Larn)



4. Ocean Marina Yacht Club

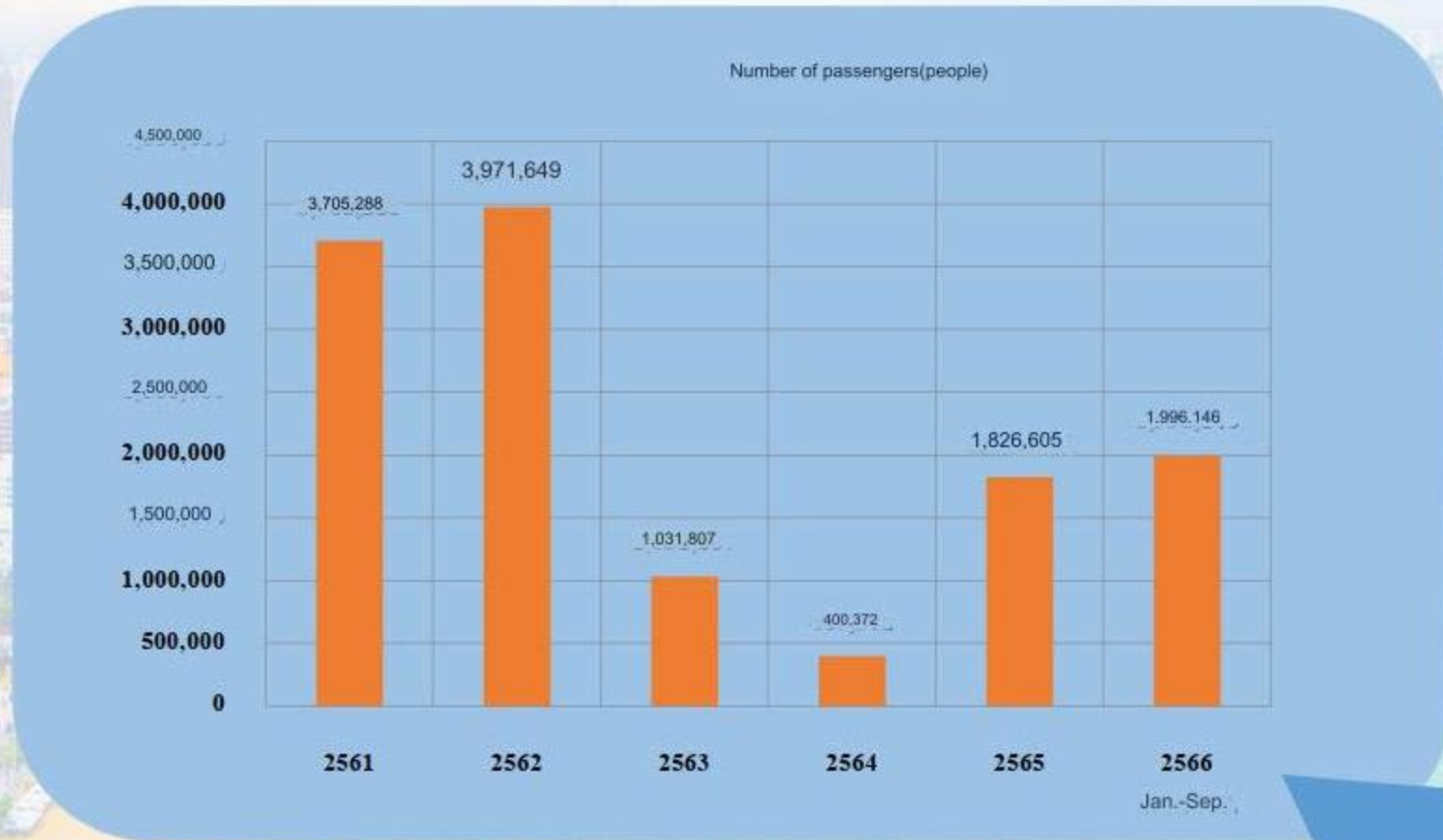


5. Sattahip Commercial Port



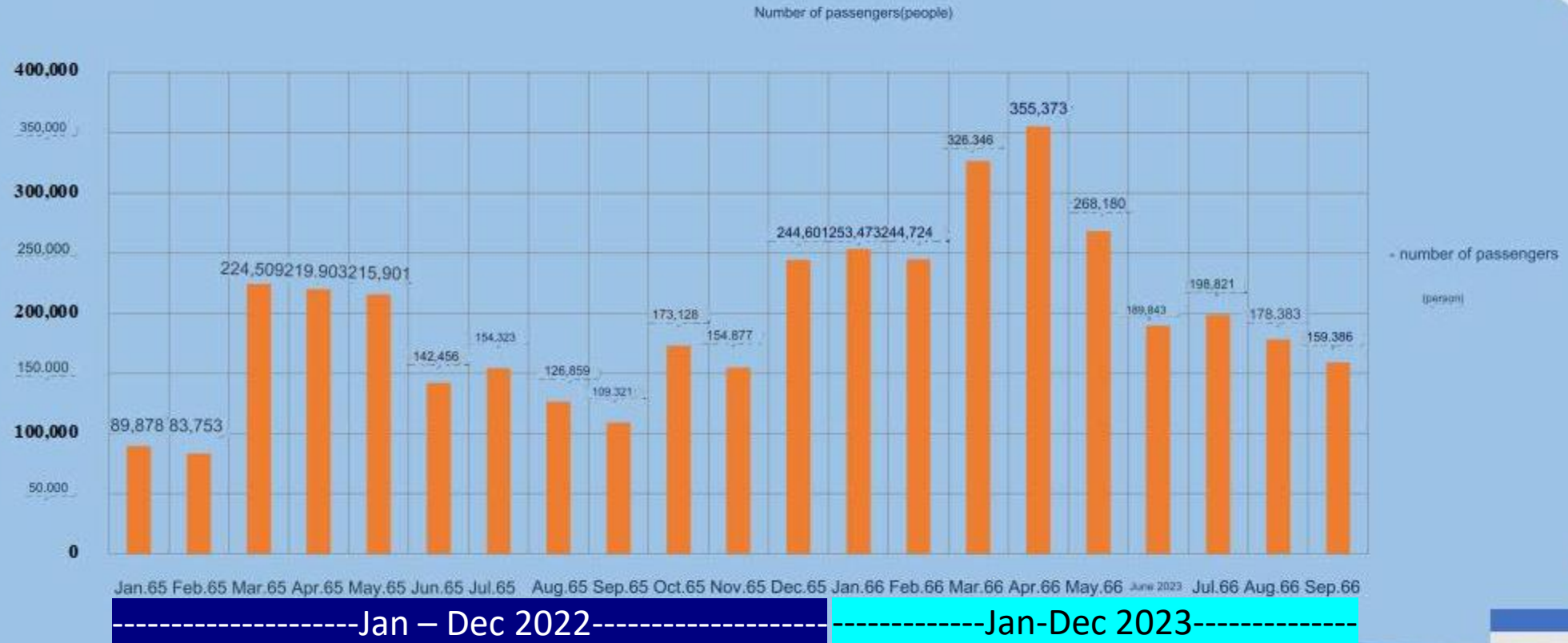
Statistics of passengers traveling by water (annual)

Pattaya South Pier – Koh Larn Pier from 2018 - September 2023



Statistics of passengers traveling by water (Pattaya)

Pattaya South Pier – Koh Larn Pier 2022 - September 2023



Boat statistics in the Pattaya area

No.	Type of boat use	Quantity (ship)	
		Chonburi Port City	Pattaya Port City
1	cargo ship		32
2	commercial fishing boat		68
3	local fishing boat		976
4	boat carrying passengers		1,496
5	Cruises and Sports		1,608
6	maritime patrol boats		33
7	Special business ship		2
8	logistics ship		6
9	The diverger is still in the ground		1
10	marine research vessel		1
11	crane boat		1
12	Support parasailing activities		4
13	patrolling the river		3
14	rescue		1
Total		0.00	4,232



Water safety measures



safe harbor

✓ The port condition is stable and strong.

☑ Install mooring anchors

✓ Install a shock protection system while the boat is parked.

✓ Install lighting fixtures

✓ There is a sign showing the number of passengers/fire extinguisher.

☑ There are officials to supervise safety.



safe boat

✓ Passed inspection for sea durability of the boat hull. ✓ Passed inspection for readiness of engine, fuel lines, fuel tank.

☑ Passed the inspection of navigation equipment, communication tools, fire extinguishing equipment, and life-saving equipment. ✓ Passed the verification of the correctness of the ship's documents.



safe people

✓ Require social distancing.

✓ Every passenger wears a life jacket that has been certified by the Marine Department.

✓ The number of passengers is counted. Prevent overloading

✓ Passengers do not compete with each other to get on and off the boat.



Water safety measures



Before the festival

- Training to provide knowledge to entrepreneurs ship operator
- to the ship owner The boat operator inspects the condition and readiness of the boat and engine to ensure that Readiness before setting sail every time
- Organize a unit to conduct joint inspections regarding documents, condition of the ship's hull, machinery, and equipment.
- Prepare guidelines for operators of passenger ships.
- Inspect and suppress

Facilitate tourists



During the festival

- Establish a convenience center and
- Joint water safety**
- Supervision and inspection of passenger boats
- Inspect and suppress

Facilitate tourists





Accidents in the area before 2016

boat on fire



Boat crash



The ship ran aground.



The ship sank





Operations under the mission plan for water safety supervision

According to the strategy for improving

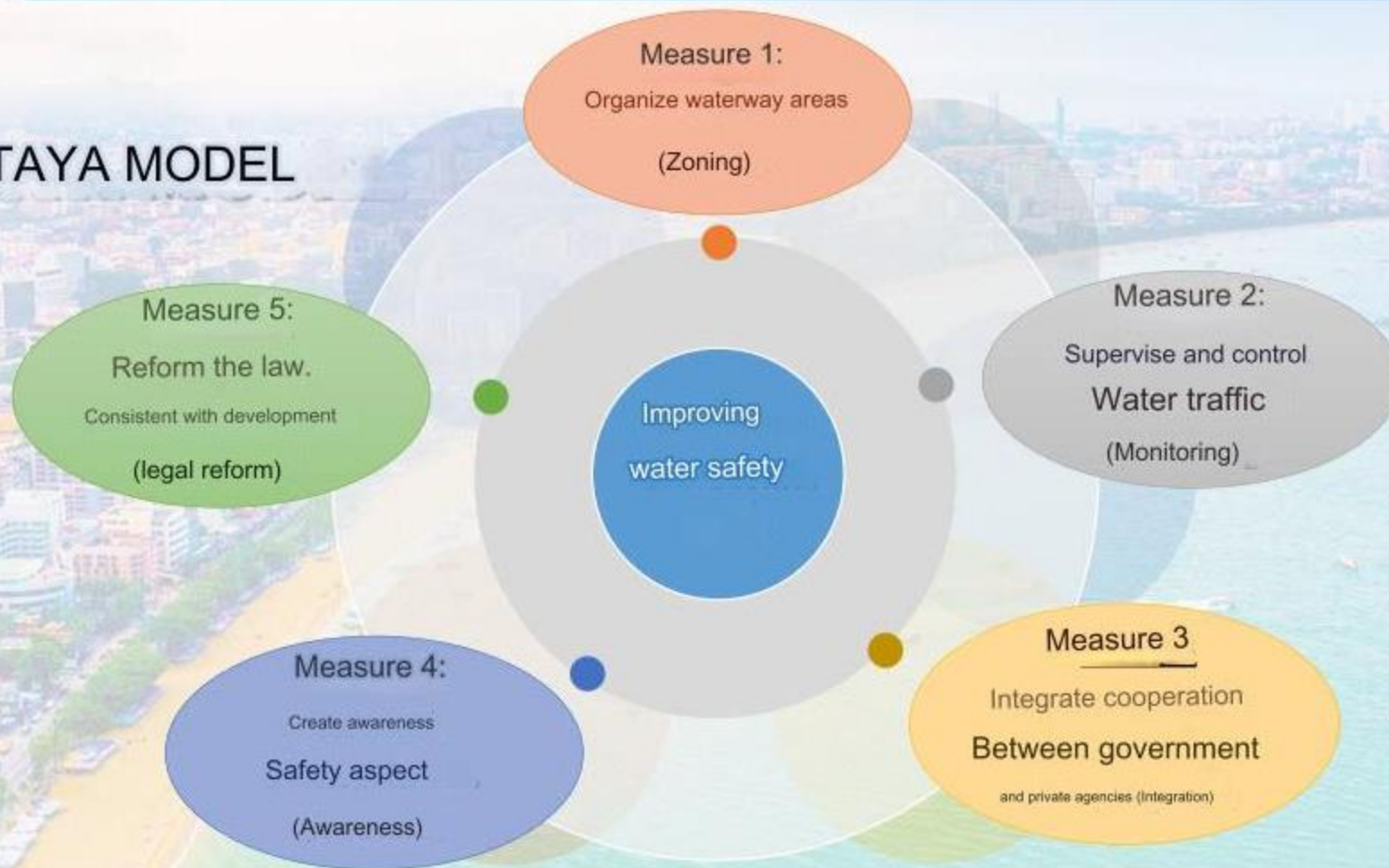
water safety (PATTAYA MODEL)





Strategies for improving water safety

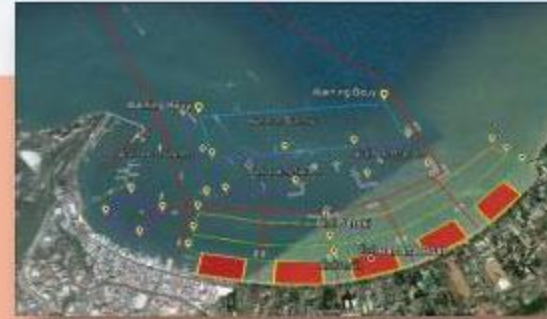
PATTAYA MODEL





Measure 1: Organize waterway areas (ZONING)

- ✓ Project to designate water activity areas
- ✓ Traffic dividing line project and sea lanes
- ✓ Project for laying buoys marking navigation and buoys marking boat speed limits





Measure 1: Organize waterway areas (ZONING)



Project to designate water activity areas



Traffic dividing line project and sea lanes



Project for laying buoys marking navigation and buoys marking boat speed limits





Measure 2: Supervise and control water traffic (MONITORING)

- ✓ Surveillance and law enforcement projects
- ✓ Closed-circuit television installation project
- ✓ Project to procure patrol boats



Measure 2: Supervise and control water traffic (MONITORING)

✓ Surveillance and law enforcement projects





Measure 2: Supervise and control water traffic (MONITORING)

✓ CCTV installation project

✓ Check the correctness of the document

- ship's documents
- Shipman's documents

✓ Check the equipment

- nautical equipment
- communication tools
- fire extinguishing equipment
- Life-saving equipment

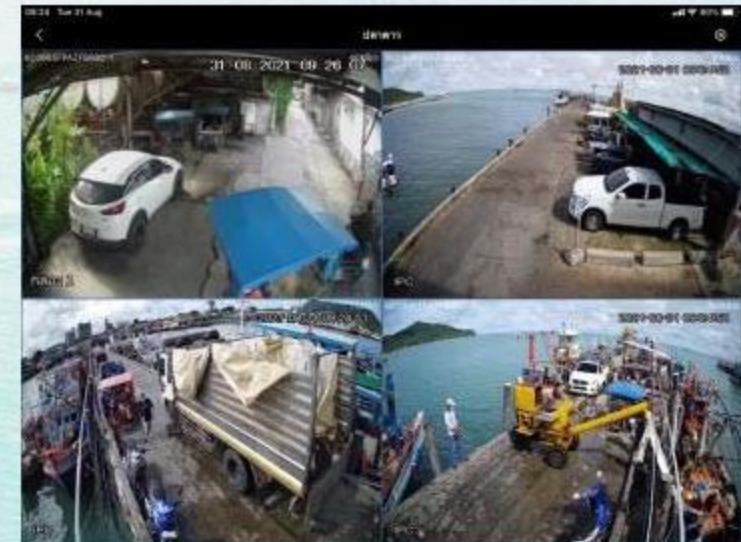
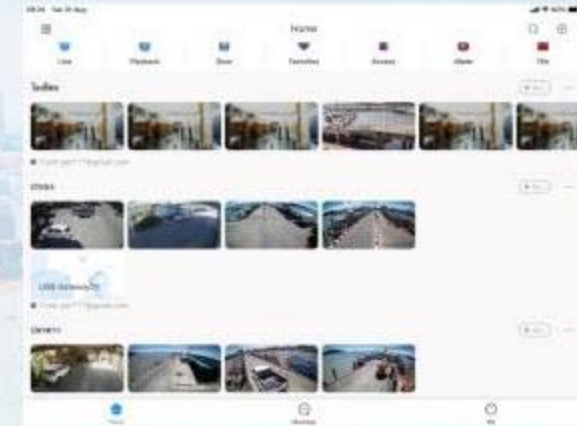




Measure 2: Supervise and control water traffic (MONITORING)

✓ Closed-circuit television installation project

- Bringing IT or innovation into work
- Using mobile applications to link CCTV data





Measure 2: Supervise and control water traffic (MONITORING)

✓ Project to procure patrol boats



Patrol boats with high mobility

Chao Tha 276 and Chao Tha 277



Patrol motorboat

Chao Tha 285



Measure 3: Integrate cooperation between public and private agencies (INTEGRATION).

- ✓ Project to grant power of "Harbour Master" to Pattaya City and Chonburi Province and related agencies
- ✓ Safety network project
- ✓ Rescue Assistance Network Project



Measure 3: Integrate cooperation between public and private agencies (INTEGRATION).



Project to grant power of "Harbour Master" to Pattaya City and Chonburi Province



Weekly joint operations Special inspection kit



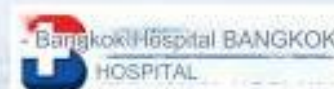
Measure 3 Integrating cooperation between public and private agencies (INTEGRATION)



Safety network project



Establish a water safety center to participate in various festivals.



- Regional Harbor Office, Pattaya Branch
- Pattaya City
- Bang Lamung District
- tourist police
- water police
- Tourism and Sports Office Chonburi Province
- Office of Disaster Prevention and Mitigation
- Bangkok Pattaya Hospital
- Sawang Boriboon Rescue Unit, Pattaya City
- Asawari (Marine Department)





Measure 3 Integrating cooperation between public and private agencies (INTEGRATION)

✓ Rescue Assistance Network Project



Integrated training plan to help water disaster victims in Chonburi Province



Measure 4: Create awareness of safety (AWARENESS)

- ✓ Entrepreneur training project and those working on the ship
- ✓ Campaign project and public relations safety in traveling



Measure 4: Create awareness of safety (AWARENESS)



Entrepreneur training project and those working on the ship



Entrepreneur training project and those working on the ship To review knowledge and understanding about various water safety rules, regulations, and measures. related



Measure 4: Create awareness of safety (AWARENESS)

- ✓ Campaign project and public relations regarding safety in tourism



Install campaign signs public relations Important tourist port area in the area



Measure 4: Create awareness of safety (AWARENESS)

✓ Campaign project and public relations regarding safety in tourism

Preparing a check list for the ship's master to inspect the condition of the ship, engine, and ship's equipment. Be prepared before setting sail every time.



Measure 4: Create awareness of safety (AWARENESS)

✓ Campaign project and public relations regarding safety in tourism

Prepare guidelines for passenger ship operators and passengers.

- ✓ While picking up and dropping off passengers, the engine must be turned off.
- ✓ Keep the machine out of the water when going up and down the beach.
- ✓ Always moor your boat tightly to the dock.
- ✓ Do not carry passengers beyond the limit.
- ✓ A life jacket must be worn at all times while on the boat.
- ✓ Follow the instructions of the boat operator and officials.
- ✓ In the case of strong winds
- ✓ etc.





Measure 5: Reform the law to be consistent

with development (LEGAL REFORM)

- ✓ Regulations for ship inspection regarding ship standards, ship equipment for speedboats and public passenger ships.
- ✓ Knowledge examination regulations regarding standards of knowledge and ability of practitioners in public passenger boats and ships with special formats, including the issue of identification cards for public ship operators.
- ✓ Laws to protect water disaster victims



Check the seaworthiness of the boat hull.

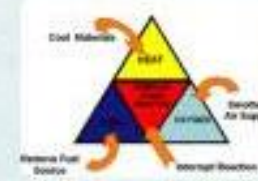


Check and check the readiness of the engine, fuel lines, fuel tank.



Check navigational equipment communication tools

Firefighting equipment and life-saving equipment



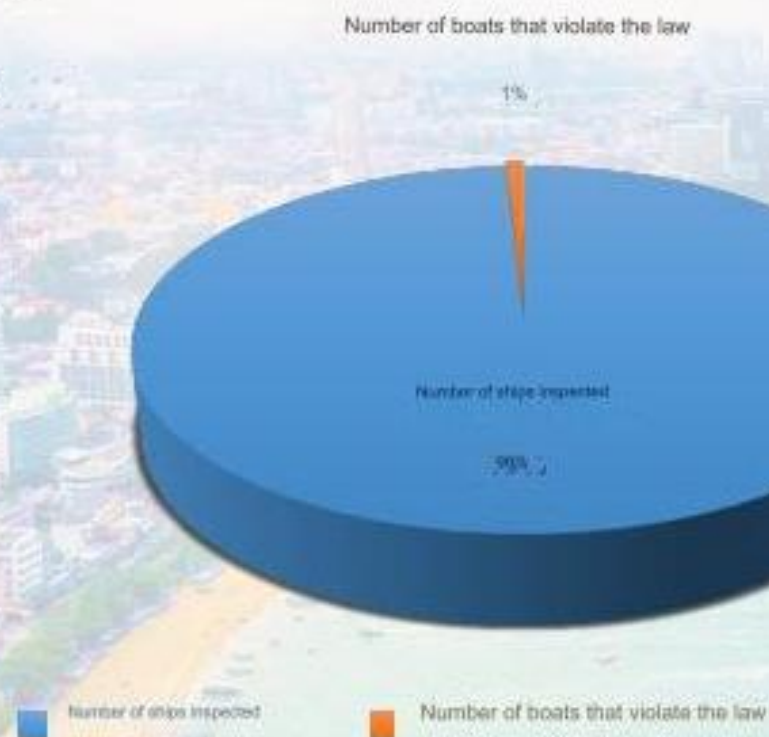


Marine Department

Protection inspection statistics suppression of waterways

fiscal year

2023



fiscal year	Number of ships inspected	Number of boats that violate the law
2023	5,387	49

- Ship name
- Ship position
- Boat speed
- Navigation direction



South Pattaya pier area
(Bali Hai Laem)

Bang Lamung District, Chonburi Province

Operations to support prevention and suppression of illegal fishing (IUU)



Status of the boat lock	Pattaya
Ready to use	19
Damaged, not ready for use	36
Sunken/wrecked, ship hull visible	20
Sinking, can't see the hull	35
Lost/not found at stopping point	0
Total (ships)	110

Preparing for the rainy season and problem conditions within the area



Marine Department

Disaster assistance center Regional Harbor Office, Pattaya Branch

Please report the situation for 28 August 2023 as follows:

1. Set up a center to prepare to help the people. Total number: 1 point
2. Help center staff Total number: 5 officers
3. Prepare the road, total of 2 cars / boat, total of 3 boats.
4. 8th Infantry Regiment, Pattaya Branch, has completed issuing notices to boaters.
5. The current situation in the area is normal.

Please be informed accordingly.



Guidelines for safety in navigation



Wave levels and guidelines for port and beach officials Regional Harbor Office, Pattaya Branch

Rev.1



level	Wind power	Onshore wind and wave conditions sea breeze	Guidelines for practice	Next steps	Instructions for boats sailing in Area of responsibility of Provincial Police Region 6 (Pattaya)
1-2	0-3 knots	The wind and waves are calm. The sea may have slight waves.	Report to the radio center of C.P.6 (Pattaya) on a regular basis.	Radio Center, District 6 (Pattaya) Acknowledge the report.	The person who controls the ship sails with Take the usual precautions.
2-3	4-7 knots	Feel the wind on your face, the leaves sway, the waves in the sea. A short but noticeable ripple of no more than 1 meter.	Report to the radio center of C.P.6 (Pattaya) more frequently and monitor the elevation of wind waves.	Radio Center 6 (Pattaya) acknowledges the report.	The person who controls the ship sails with Take normal precautions and report. If you notice that the level of wind waves is starting to get more intense or is likely to get more intense.
3-4	8 - 18 knots	There was dust scattered, there were waves of medium size about 1.5 meters, the waves became longer, and white foam felt.	Report to Radio Center 6 (Pattaya) as soon as the intensity of wind waves reaches level 3-4.	Radio Center 6 (Pattaya) acknowledges the report and reports accordingly for consideration and invitation.	The ship's operator observes the sea conditions. If it is considered unsafe, you should refrain from leaving the shore and act accordingly. Official instructions include flags, signals.
more than 4	More than 18 knots	Large branches swayed. Using an umbrella was inconvenient. Waves were about 1 meter high. The sea broke into white foam.	Report to the Radio Center, Region 6 (Pattaya) or report to your direct supervisor, as the case may be. As soon as the intensity of the wind waves reaches level 4-5.	Radio Center 6 (Pattaya) receives reports and reports to supervisors, to consider inviting Check the safety of tourists and entrepreneurs as well as coordinating with Relevant agencies to prepare in dealing with emergencies	The ship's operator observes the sea conditions. If it is considered unsafe, you should refrain from leaving the shore and act accordingly. Staff instructions include flags. Strictly signal.

Signal flag raised to half-mast.

Signal flag raised to top of the mast.



Marine Department

End of lecture

Regional Harbor Office, Pattaya Branch

Regional Harbor Office 6, Marine Department, Ministry of Transport 0

